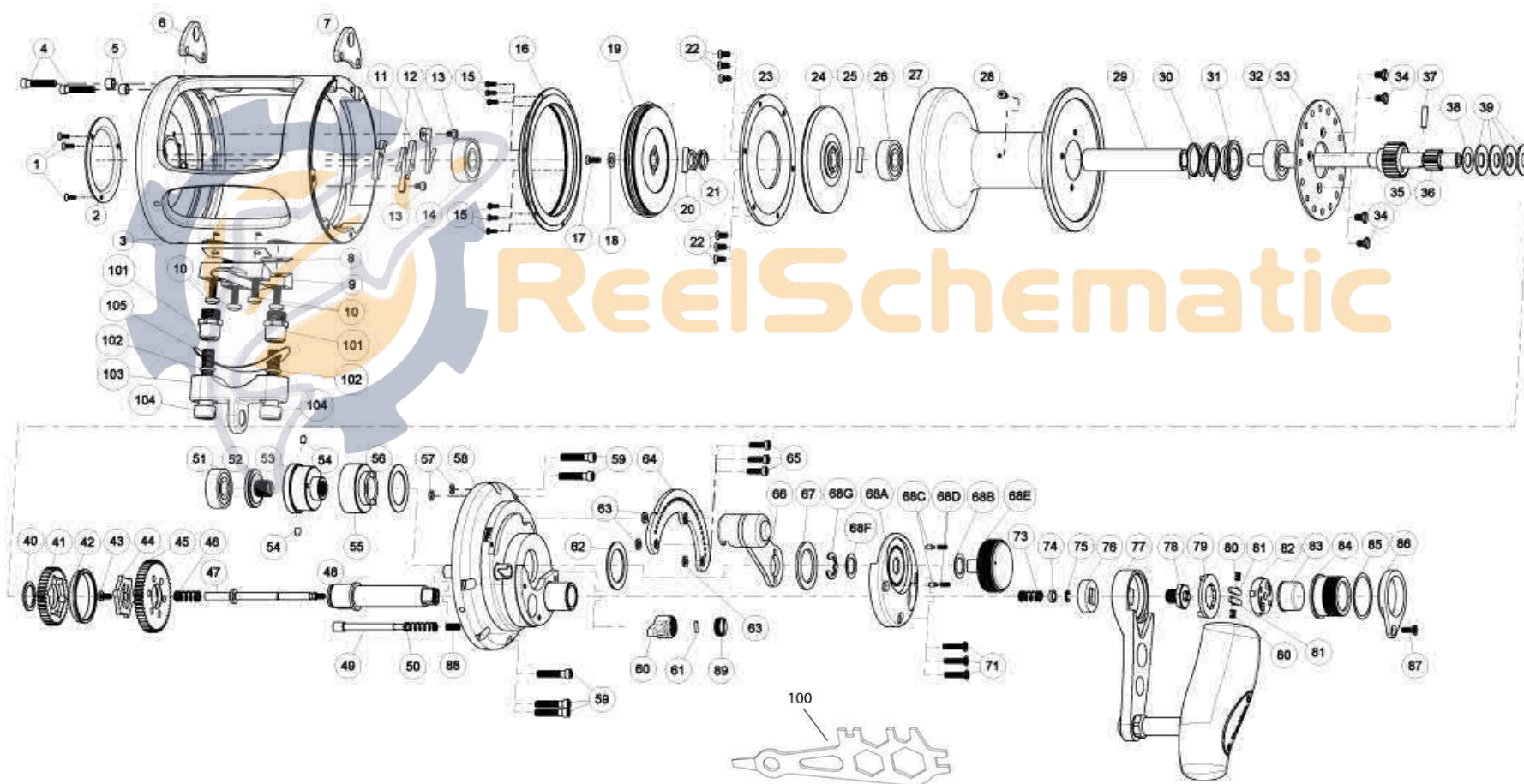


FIN-NOR®

LEGENDARY TACKLE SINCE 1933

Santiago 30W



FIN-NOR®

LEGENDARY TACKLE SINCE 1933

Santiago 30W

Fin_Nor Santiago Trolling Reels - 30W

Key No.	Description	30W			
		Key No.	Description	30W	
1	Cosmetic Cover Screw	HX107-03	51	Ball Bearing	LF017-01
2	Cosmetic Cover	LF145-01	52	Preset Screw	LF019-01
3	Frame Assembly	LF301-01	53	Cam Follower	LF153-01
4	Harness Lug Screw	LF053-01	54	Cam Pin	LF093-01
5	Harness Lug Screw Collar	LF094-01	55	Cam	LF028-01
6	Harness Lug	LF151-02	56	Washer	LF035-03
7	Harness Lug	LF151-01	57	O-Ring	MF101-01
8	Reel Foot Gasket	LF155-01	58	Gear Side Cover Assembly	LF324-01
9	Reel Foot	LF106-01	59	Side Cover Screw	LF053-01
10	Reel Foot Screw	LF125-01	60	Bait Click Lever	VF109-01
11	Anti Reverse Pawl	LF063-01	61	Bait Click Pawl Pin	WF100-01
12	Anti Reverse Pawl Spring	LF052-01	62	Drag Lever Washer	LF035-01
13	Anti Reverse Pawl Screw	LF050-01	63	Quadrant Spacer	MF094-01
14	Ball Bearing	MF017-01	64	Quadrant	LF152-01
15	Spool Cover Screw	LF057-01	65	Quadrant Screw	LF123-01
16	Spool Cover	LF051-01	66	Drag Lever Assy	LF355-01
17	Spool Shaft Screw	LF107-02	67	Washer	LF035-02
18	Spool Shaft Washer	MF038-01	68	Front Housing Cover Kit include	LF499-01
19	Drag Plate Assembly -"B"	LF348-01	68A - Front Housing Cover 68B - Washer 68C - Pre Set Knob Click Pawl 68D - Pre Set Knob Click Spring 68E - Preset Knob 68F - Washer 68G - E-Clip	LF099-01	
20	Drag Plate Pin	LF100-01		LF038-01	
21	Drag Compression Spring	LF040-01		PW098-01	
22	Drag Washer Screw	LF107-01		YW114-01	
23	Drag Washer	LF045-01		LF029-01	
24	Drag Plate Assembly -"A"	MF348-01		LF038-01	
25	Drag Plate Pin	LF100-01		LF092-01	
26	Ball Bearing	LF017-01		71	MF050-01
27	Spool	LF021-01		73	LF070-01
28	Line Ting Screw	NF125-01	74	MF081-01	
29	Bearing Spacer	MF160-01	75	QW120-01	
30	Pressure Release Spring	MF040-01	76	LF081-01	
31	Pressure Release Spring Holder	LF041-01	77	LF318-01	
32	Ball Bearing	LF017-01	78	MF003-01	
33	Bait Click Plate	LF113-01	79	LF034-01	
34	Bait Click Plate Screw	MF107-01	80	MF070-01	
35	Low Speed Pinion Gear	LF011-01	81	LF104-01	
36	Spool Shaft	LF015-01	82	MF159-01	
37	Pinion Gear Pin	MF093-01	83	MF062-01	
38	Drag Adjusting Washer	LF032-00	84	LF158-01	
39	Drag Disc Spring	LF046-01	85	MF035-01	
40	Retaining Ring	LF075-01	86	LF159-01	
41	Low Speed Drive Gear	MF012-01	87	MF076-01	
42	Gear Spacer	LF160-01	88	JF071-01	
43	Link Retainer Screw	MF053-01	89	VF115-01	
44	Link	LF036-01	100	DA113-01	
45	High Speed Drive Gear	LF012-01	101	LF003-01	
46	Link Spring	LF070-01	102	LF101-01	
47	Link Shaft	LF146-01	103	LF154-01	
48	Crank Shaft	LF008-01	104	MF125-01	
49	Bait Click Pawl	LF114-01	105	MF155-01	
50	Bait Click Spring	LF110-01			